



Laboratory Solutions

Fume Hood and Laboratory Space Controls

LABORATORY SOLUTIONS

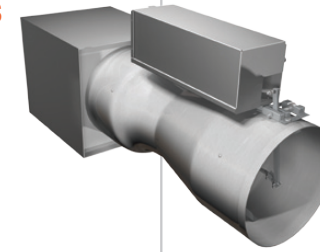
Laboratory Space Controller

- Native BACnet MS/TP (BTL Listed)
- High speed room level network
- Control multiple supply and general exhaust valves
- Temperature and humidity control



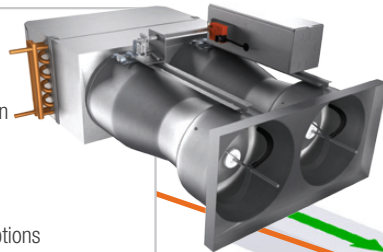
General Exhaust Venturi Valves

- Medium (0.6 to 3.0 in.w.c.) or low (0.3 to 3.0 in.w.c.) pressure operation
- High-speed actuation
- Characterized and calibrated using NIST traceable equipment
- Integrated silencer options
- Analog operating pressure feedback



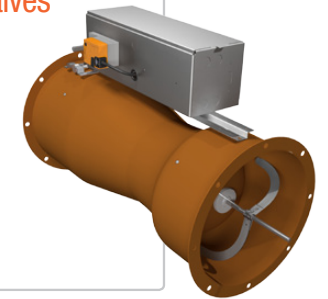
Supply Venturi Valves

- Medium (0.6 to 3.0 in.w.c.) or low (0.3 to 3.0 in.w.c.) pressure operation
- High-speed actuation
- Characterized and calibrated using NIST traceable equipment
- Integrated silencer and reheat coil options
- Analog operating pressure feedback



Fume Hood Exhaust Venturi Valves

- Medium (0.6 to 3.0 in.w.c.) or low (0.3 to 3.0 in.w.c.) pressure operation
- High-speed actuation
- Characterized and calibrated using NIST traceable equipment
- Integrated silencer options
- Analog operating pressure feedback
- Optional corrosion resistant coatings



Room Pressure Sensor

- Maintenance and calibration-free sensor technology
- Accurate to 3% of reading + 0.0008 in.w.c. (0.02 Pa)
- Designed to prevent buildup of airborne particulates



Thermostat

- LCD, dial, or blank-face options
- Optional humidity monitoring
- Full setup and balancing functions
- Computer connection port using Price LINKER2



Fume Hood Controller

- Sash position, sidewall sensor or combination face velocity control
- High speed response
- LCD fume hood monitor
- Data reported over BACnet through LSC



FUME HOOD SOLUTIONS

Sash Sensor

- Up to three (3) sensors supported
- 50 in. and 120 in. lengths
- Stainless steel cable
- Easy two-wire connection



Presence Sensor

- High sensitivity Doppler shift radar detection
- Occupancy logic options provide the ability to customize control to meet application needs
- Low profile surface mount to top face of fume hood



Fume Hood Controller (FHC)

- Native BACnet MS/TP
- Sash, sidewall, combination control methods
- Multiple sensor inputs
- High speed, stable control



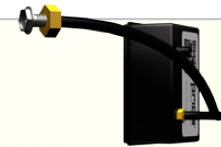
Fume Hood Interface (FHI)

- Digital display
- Customizable light bars
- Full setup and diagnostic menus
- LINKER2 port for controller connection to laptop
- Audible and visual alarms



Sidewall Sensor

- Up to two (2) sensors supported
- Easy to install
- High accuracy
- Plug & Play connection



FUME HOOD CONTROLLER OVERVIEW

Price's Fume Hood Controller (FHC) is the ideal solution for controlling face velocity on variable volume fume hoods.

The FHC supports airflow control for the Price Venturi Valve. This controller is factory mounted to the valve for convenient

access and trouble free installation. Each controller incorporates an easy-to-navigate, microprocessor-based controller with an intuitive user interface that features a backlit LCD screen, seamless keypad and antimicrobial infused casing.

The FHC comes standard with an analog pressure output signal that can be used to signal low pressure alarm conditions on a Venturi Valve, in addition to providing the signal to the BMS for reducing fan static pressure.

LABORATORY SPACE CONTROLLER NETWORK

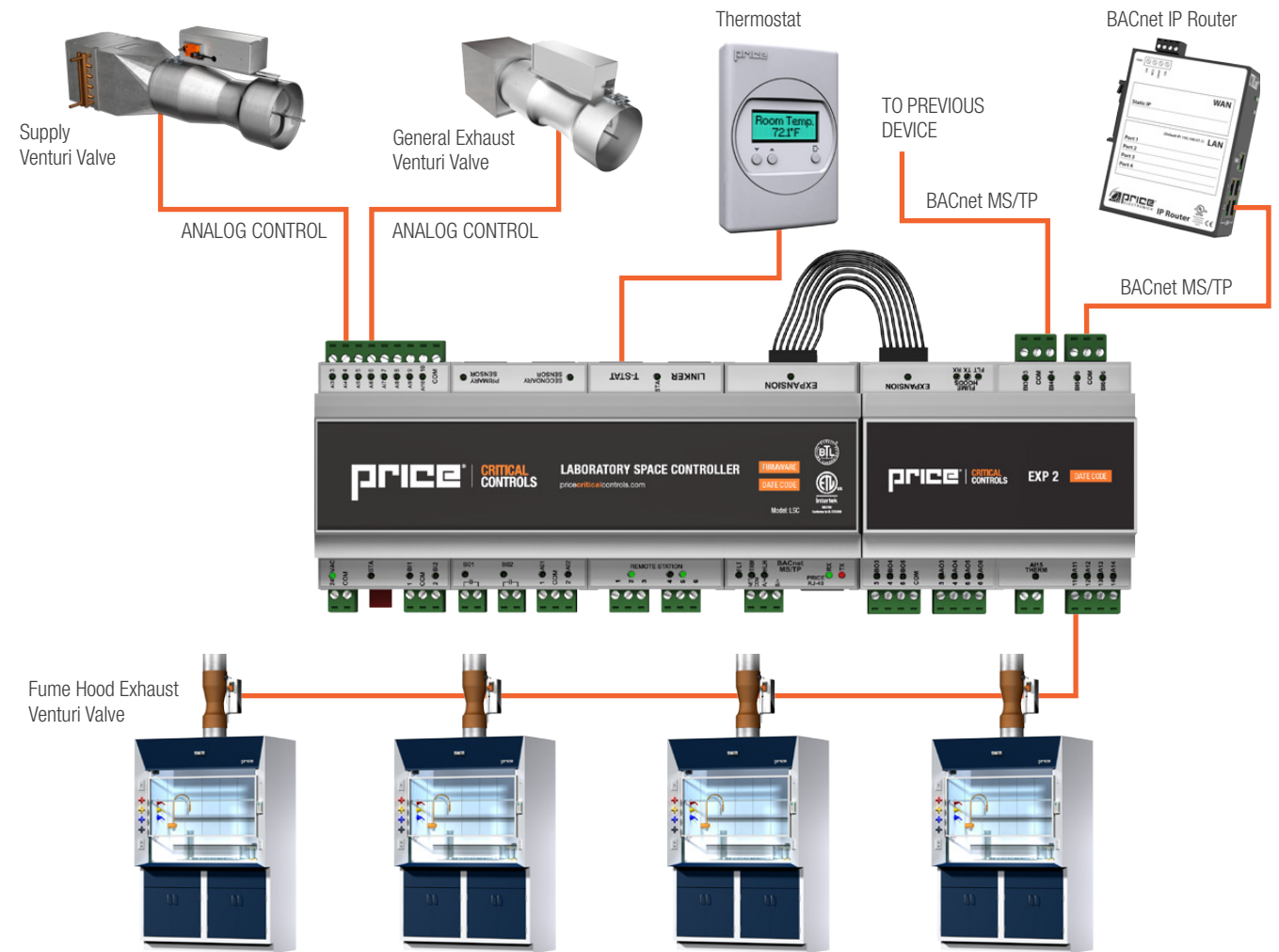
The Laboratory Space Controller (LSC) is designed for applications that require airflow and temperature control using a dedicated system, that ties in to the fume hoods within the space.

The LSC is a digital controller that maintains a constant volumetric offset between supply, general exhaust and fume hood air valves in VAV systems to ensure accurate control of directional airflow.

The FHC is connected to the LSC using a local high speed network, for a less than one second speed of response between controllers. The LSC is a configurable controller that allows for exceptional

comfort and energy efficiency utilizing Price thermostats. Wiring of the controller, fume hoods and thermostats is simple and error proof with RJ-45 (network type) connections to each device and the BACnet network, with settings that are easily adjustable in the field.

Up to 8 supply and general exhaust valves, in any combination, can be connected to the LSC at one time. Concurrently, up to 16 fume hood controllers can be connected as well.

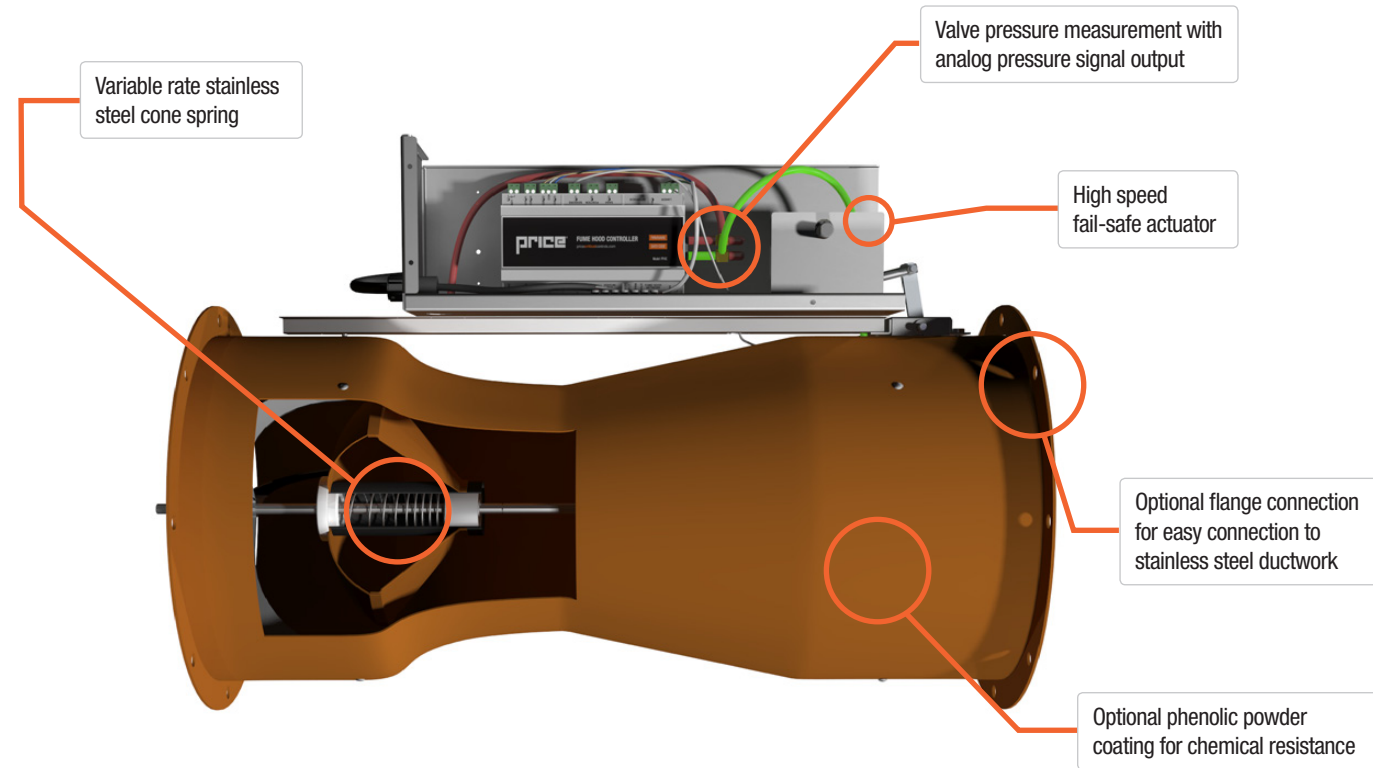


VENTURI VALVES

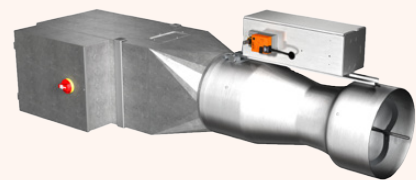
Price Venturi Valves (VV) are mechanically pressure independent control devices designed specifically for laboratory space and fume hood control applications.

Available in variable or constant air volume configurations, the VV is able to control flow without the need for measuring devices in the airstream, giving a high turndown ratio of 16:1 to reduce air change rates for energy savings.

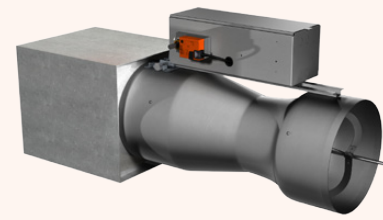
Price VVs are available with integrated silencers and/or hot water or electric reheat coils as complete assemblies. All silencers and reheat coils are tested and manufactured in-house with designs optimized for close-coupling with Price VVs.



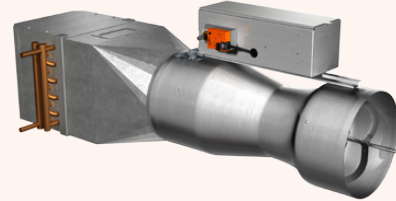
INTEGRATED OPTIONS



VENTURI VALVE WITH ELECTRIC REHEAT
CERTIFIED TO UL1995



VENTURI VALVE WITH INTEGRATED SILENCER



VENTURI VALVE WITH HOT WATER COIL
CERTIFIED TO AHRI410

PRICE RESEARCH CENTER NORTH

Price Research Center North (PRCN) is a world-class testing and demonstration laboratory located in Winnipeg, Canada.

The 28,000 square foot facility includes multiple sound measurement and testing spaces, along with the most advanced radiant testing chamber in North America. In addition, the research center boasts four rooms dedicated to the advancement and understanding of hospital and laboratory applications.

The Interactive Venturi Valve Display Wall allows PRCN visitors to see how venturi valves respond to real-world conditions such as poor inlet or outlet connections, system pressure changes and the incorporation of noise control technology.

The Patient Isolation Room effectively demonstrates how different valve configurations can impact system operation while also facilitating the comparison of different room pressure control strategies.

With multiple fume hood types, adjustable valve configurations and a full laboratory control system, the Laboratory Performance Demonstration Room helps visitors understand the challenges of maintaining a safe lab environment and how they can be efficiently addressed.

We invite you to visit PRCN today - please contact your local sales representative to arrange for a visit.



PATIENT ISOLATION ROOM



INTERACTIVE VENTURI VALVE DISPLAY WALL



LABORATORY PERFORMANCE DEMONSTRATION ROOM



Product Improvement is a continuing endeavour at Price. Therefore, specifications are subject to change without notice. Consult your Price Sales Representative for current specifications or more detailed information. Not all products may be available in all geographic areas. All goods described in this document are warranted as described in the Limited Warranty shown at priceindustries.com. The complete Price product catalog can be viewed online at priceindustries.com.